




RAINY MOUNTAIN
ROYALTY CORP.
www.rmroyalty.com



TSX.V: RMO

Frankfurt Exchange: EK7N-FF

January 2017 Presentation



DIRECTORS, OFFICERS & KEY PEOPLE

<i>Douglas L. Mason</i>	Director, President & CEO
<i>Sead Hamzagic, CPA-CGA</i>	Director & CFO
<i>Andrzej Kowalski, B.A., LL.B., LL.M</i>	Director
<i>Mehrun Payravi, Pharm.D., MBA</i>	Director
<i>Robert S. Middleton, P.Eng.</i>	QP & VP Explorations
<i>Michael Tremblay</i>	Brunswick Property Prospector

OUR PEOPLE

TSXV:RMO

FRANKFURT : EK7N-FF

RAINY MOUNTAIN ROYALTY CORP. (“RMO”)

TSX Venture Exchange Symbol	RMO
Frankfurt Exchange Symbol	EK7N-FF
Current Trading Price	\$0.11
Issued & Outstanding Shares	26,932,875
Market Capitalization	\$2,962,616
Warrants	14,660,916
Options	1,455,750
Fully Diluted	43,049,541
Market Capitalization <i>(fully diluted)</i>	\$4,735,449
<i>Updated as at January 4, 2017</i>	

COMPANY FUNDAMENTALS

TSXV:RMO

FRANKFURT : EK7N-FF

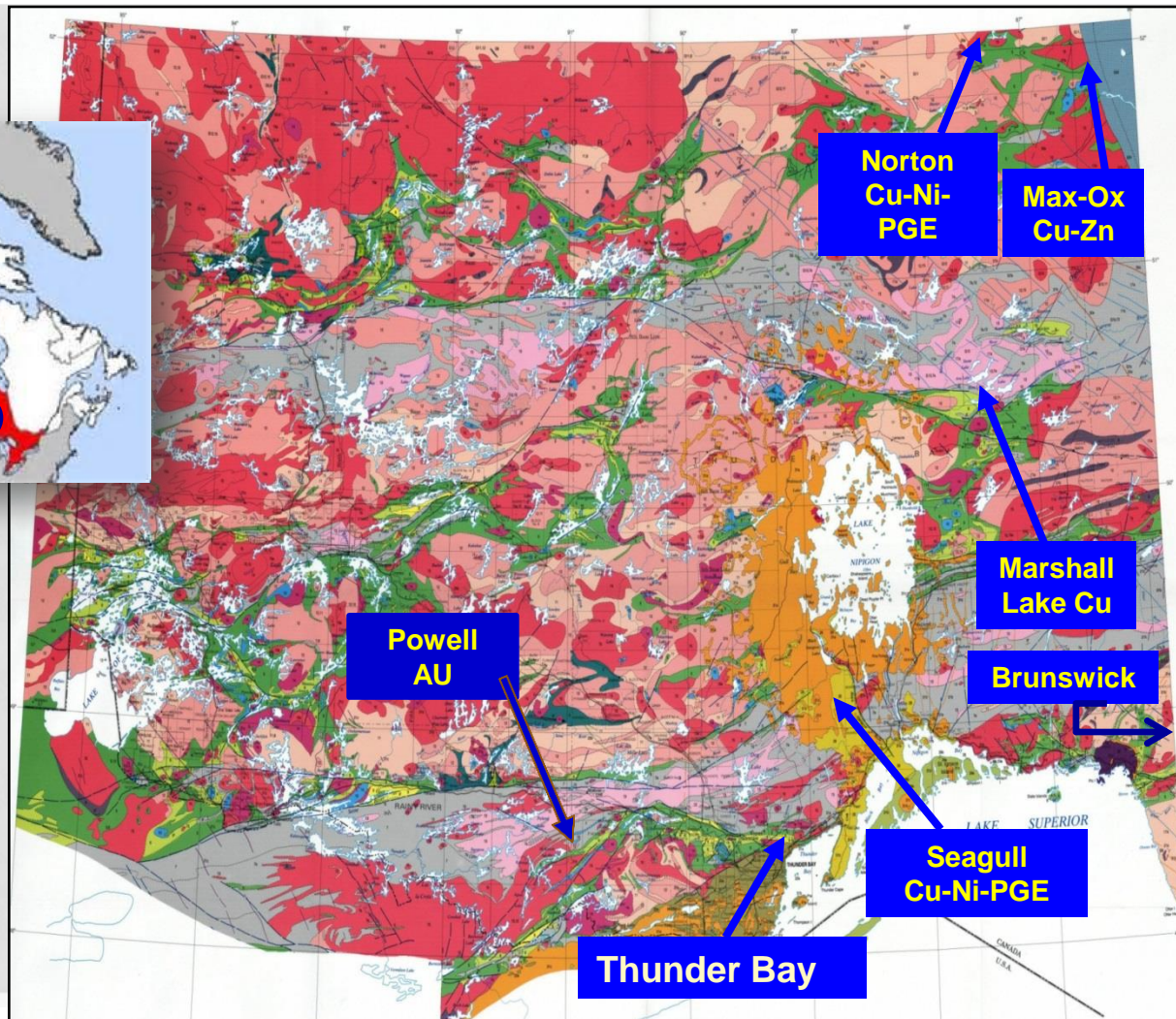


Active Properties	Joint Venture Partners/Optionees	Ownership
Marshall Lake	Copper Lake Resources Ltd. ("CPL")	Marshall Lake is a JV project between RMO (31.25%) and CPL (68.75%). CPL has an option to increase its JV interest to 75% in the project by spending a further \$1 million in exploration expenditures (\$4 million in total) by July 2017 and CPL has an additional option to increase its JV interest to 87.5% by incurring such additional expenditures as are necessary to take the project to bankable feasibility stage.
Norton Lake	Copper Lake Resources Ltd.	Norton Lake is a JV project between RMO (30.21%) and CPL (69.79%).
Powell	None	Powell is 100% owned and operated by RMO.
Brunswick	RMO has optioned the Brunswick Property from Michael Tremblay/Fiorella Santamaria	The Brunswick Property is currently owned by Michael Tremblay (50%) and Fiorella Santamaria (50%). Rainy Mountain can earn a 100% interest in the Brunswick Property by making a series of cash payments over five years (totaling \$150,000) and issuing a total of 300,000 shares in 3 installments over 2 years.
Seagull	Canadian International Pharma Corp. ("CIP") White Metal Resources Corp. ("WHM")	Seagull is a JV project between RMO (30%), CIP (40%), WHM (30%). Minfocus Exploration Corp. has been granted an option to earn a 55% interest (and additional options to earn a 70% and 85% interest based on additional property expenditures and payments to the JV partners).
Max	Great Lakes Resources LLC ("GLR")	Max is a JV project between RMO (40.9%) and GLR(59.1%).

OUR PROPERTIES

TSXV:RMO

FRANKFURT : EK7N-FF



PROPERTY LOCATIONS, ONTARIO, CANADA

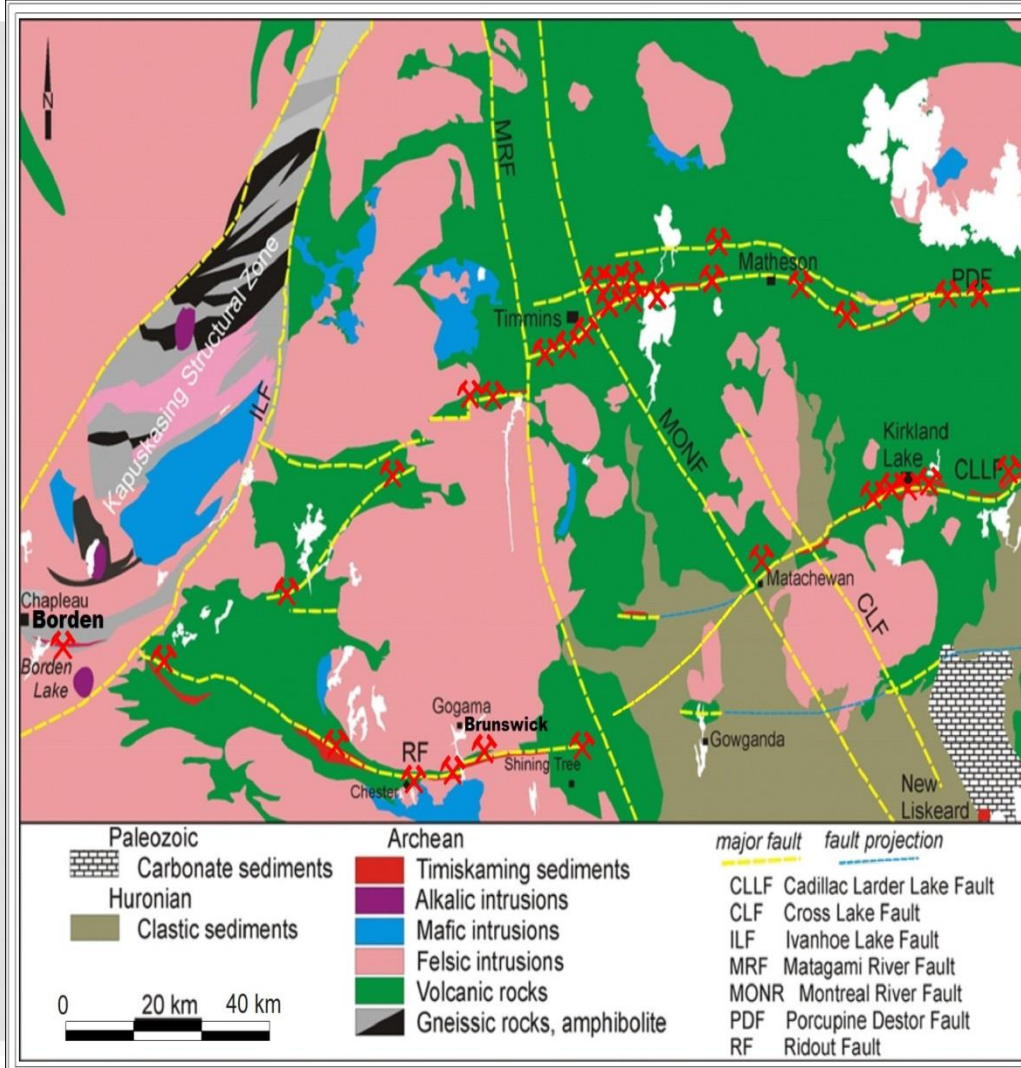
TSXV:RMO

FRANKFURT : EK7N-FF



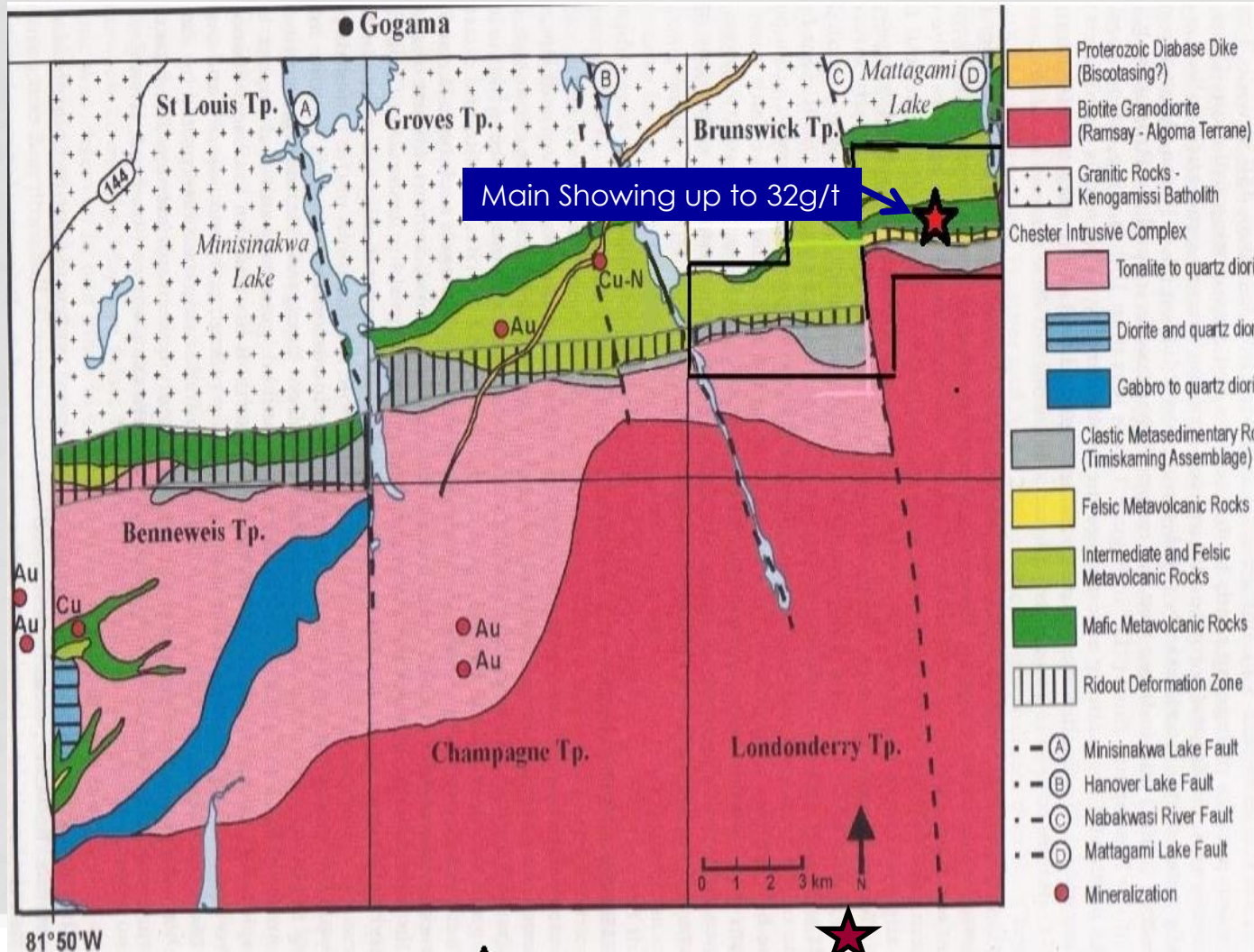
BRUNSWICK PROPERTY

GOLD EXPLORATION



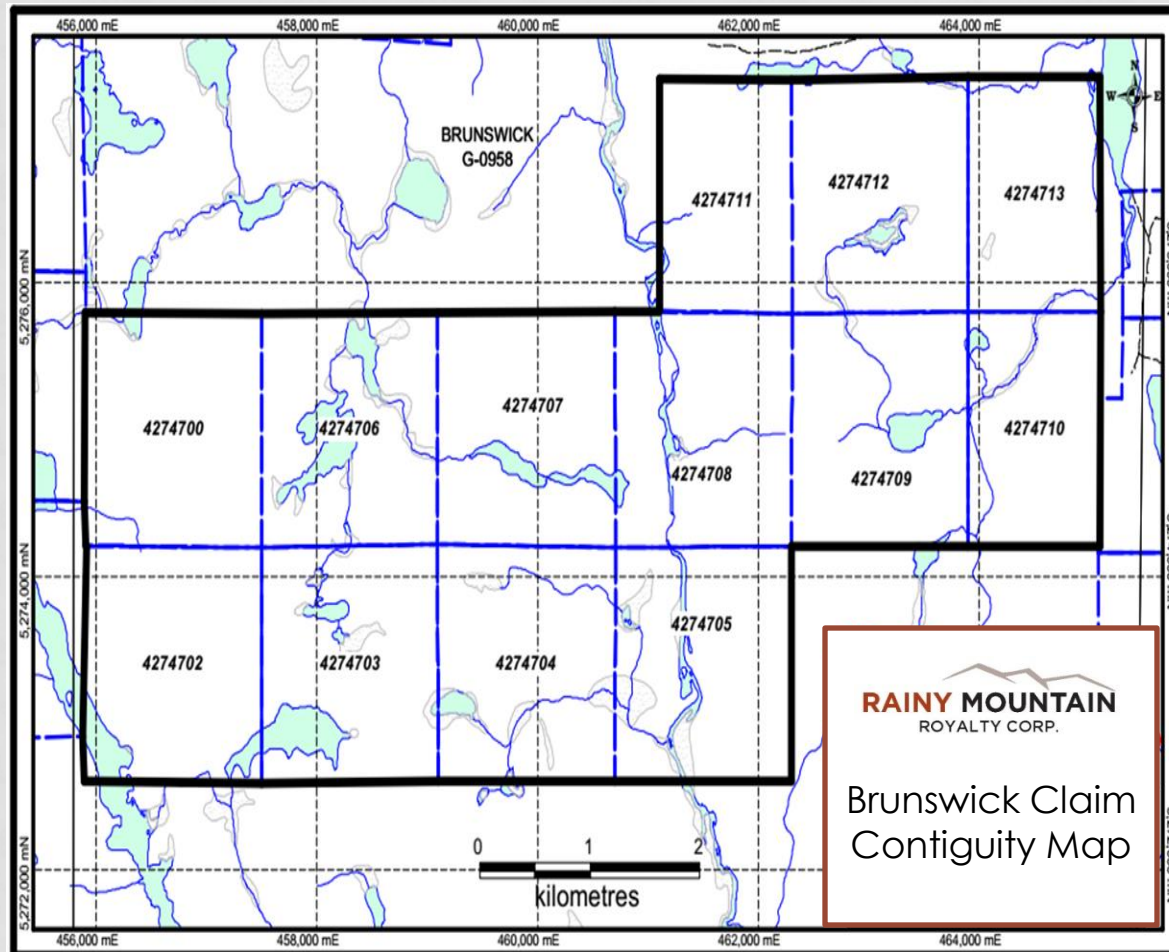
MAJOR FAULTS AND GOLD DEPOSITS IN ONTARIO

BRUNSWICK PROPERTY REGIONAL GEOLOGY



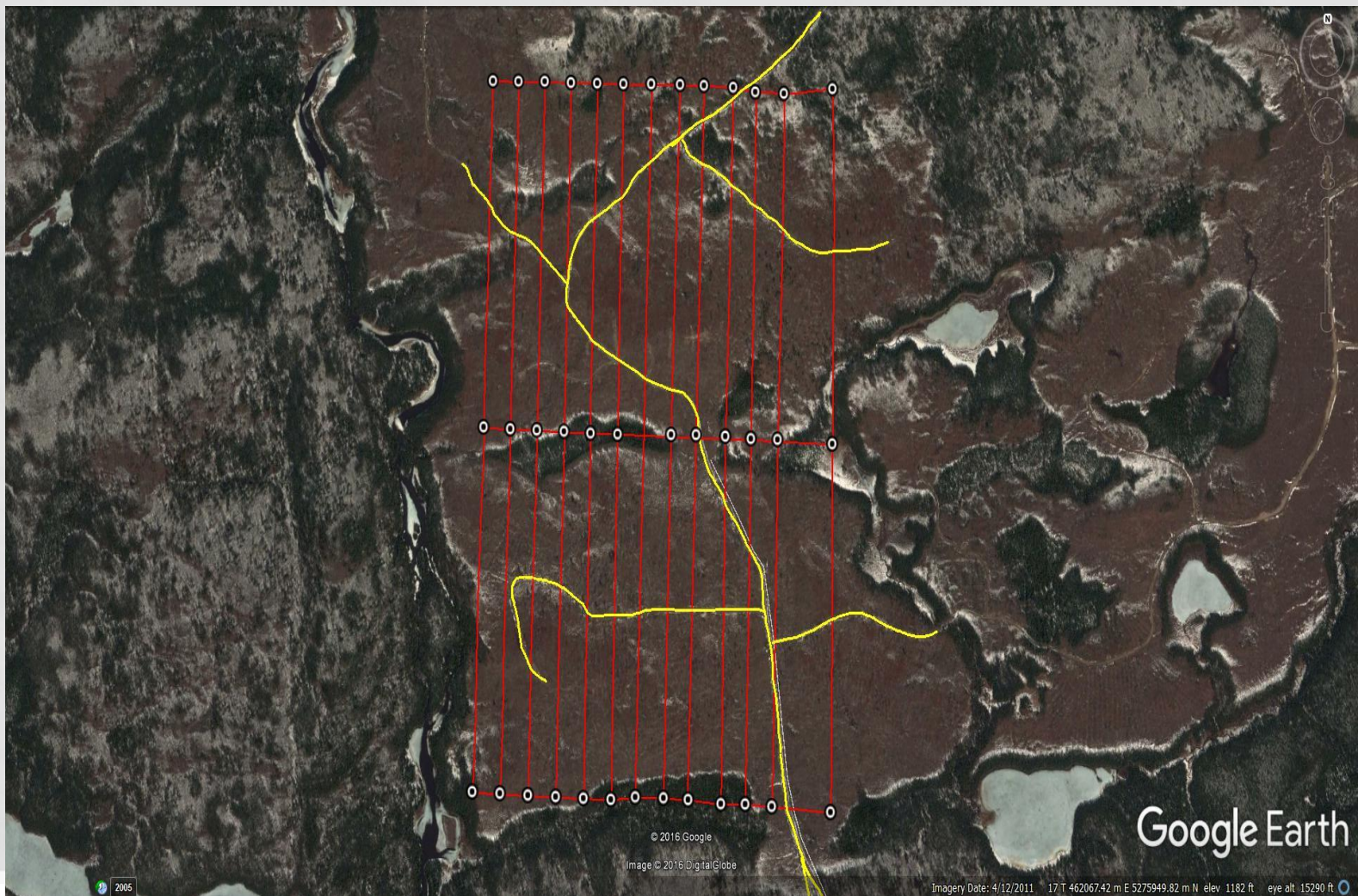
TOWNSHIP AND GEOLOGY MAP

BRUNSWICK PROPERTY



BRUNSWICK PROPERTY CLAIM BLOCK

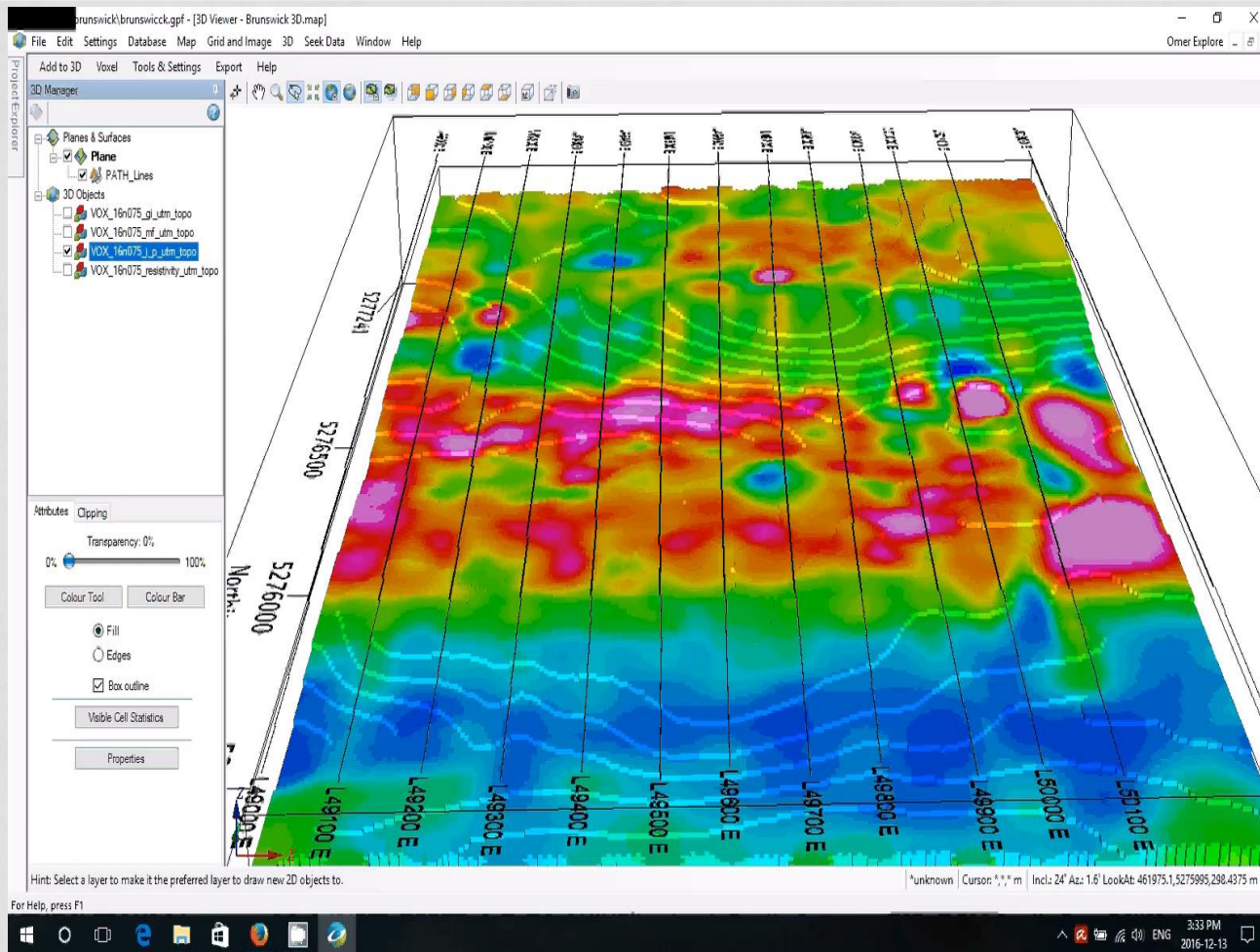
CLAIM CONTIGUITY MAP



BRUNSWICK PROPERTY GRID

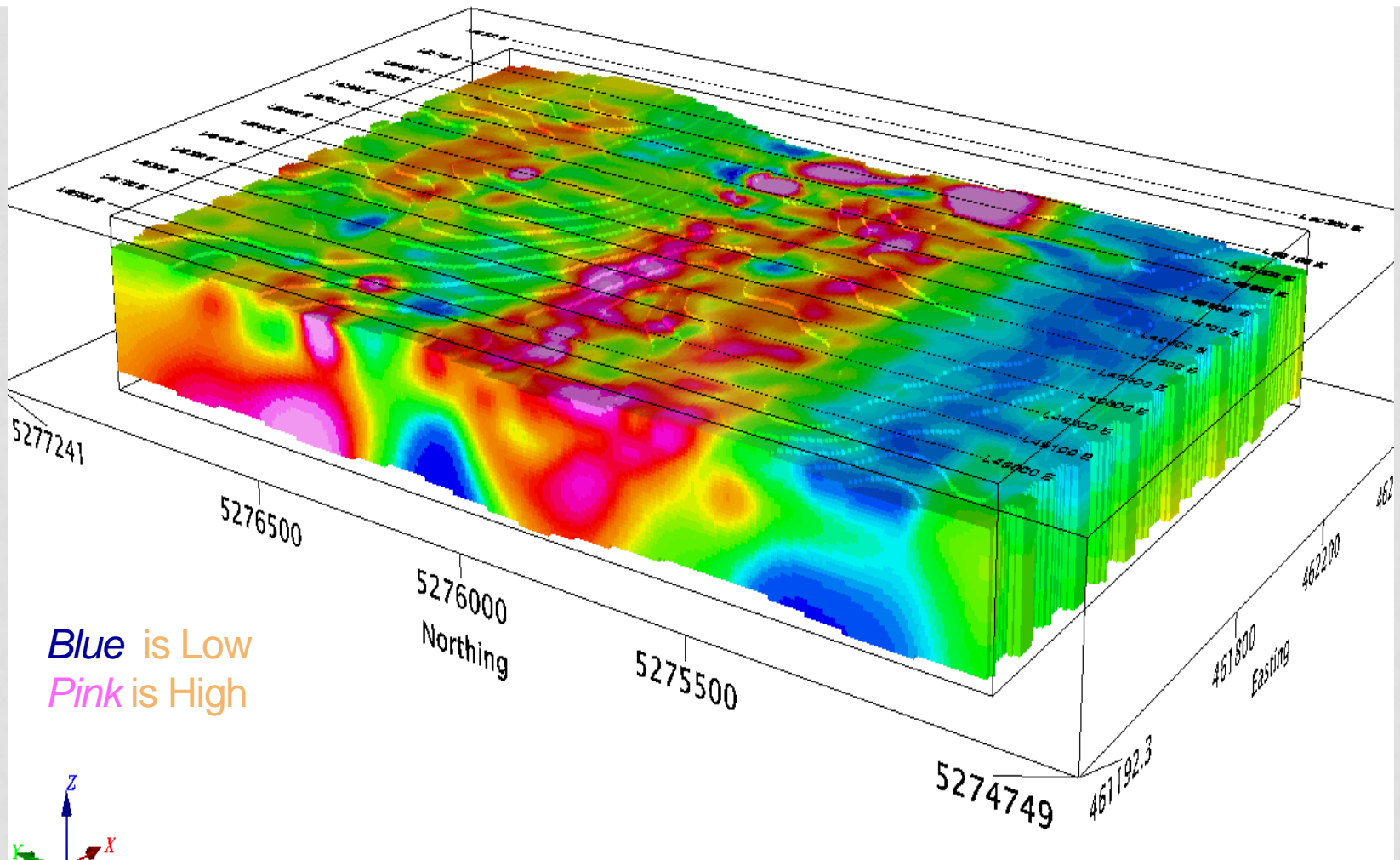
TSXV:RMO

FRANKFURT : EK7N-FF



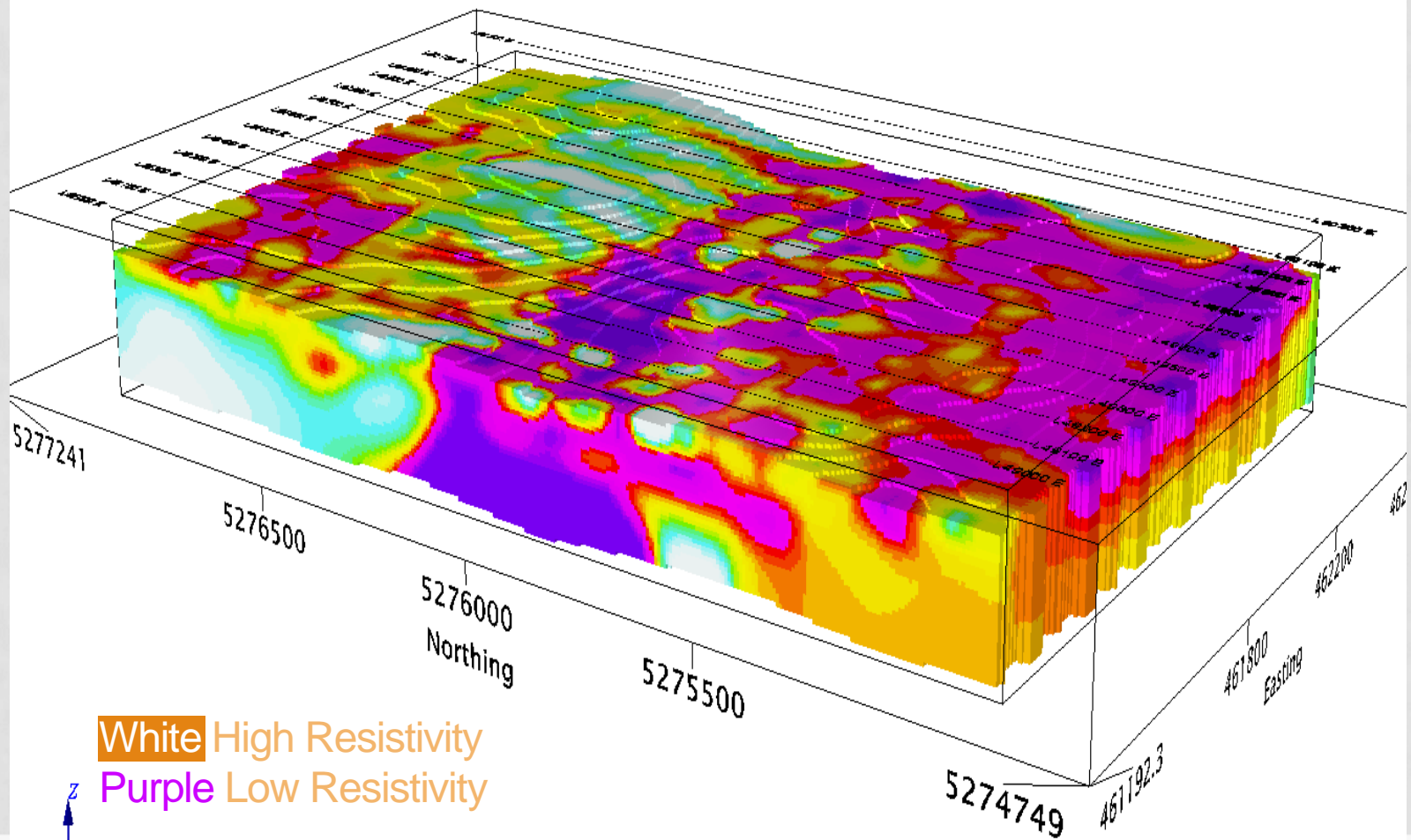
BRUNSWICK PROPERTY

3D IP MOVIE



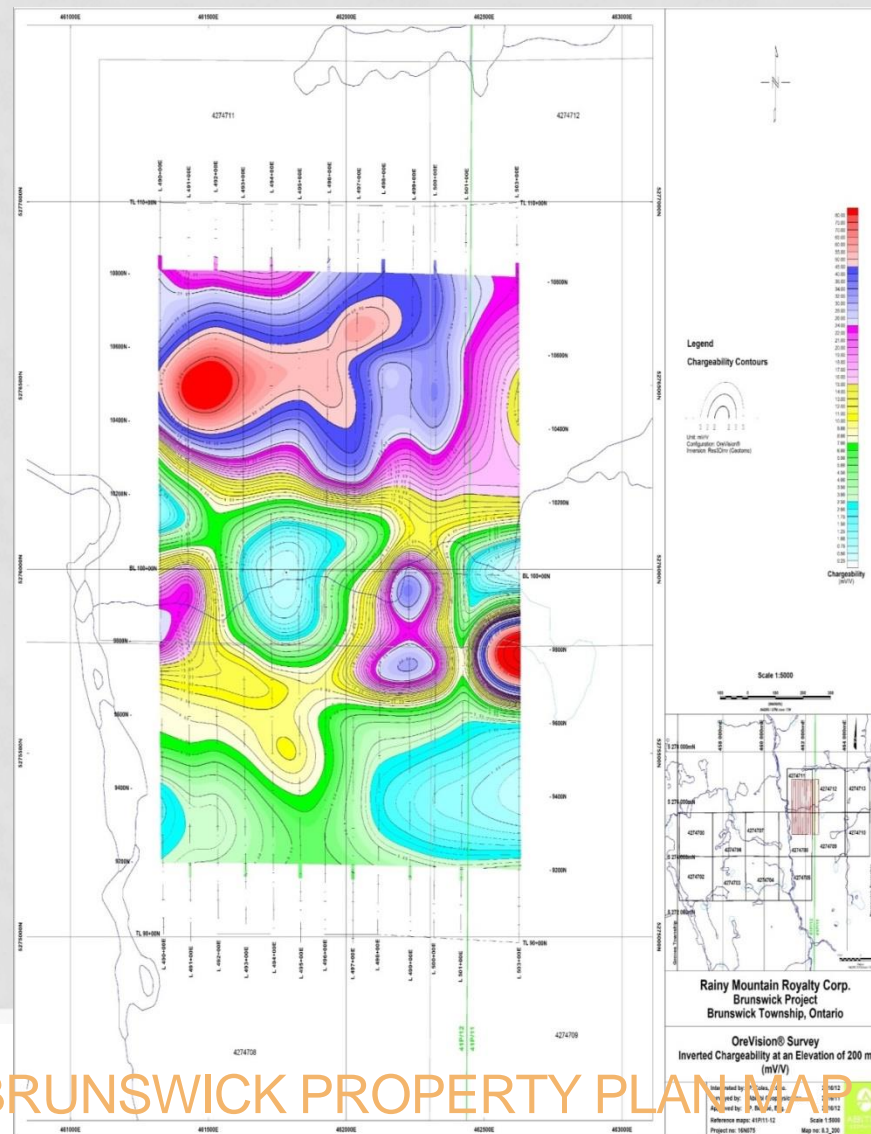
BRUNSWICK PROPERTY

3D IP SURVEY RESULTS



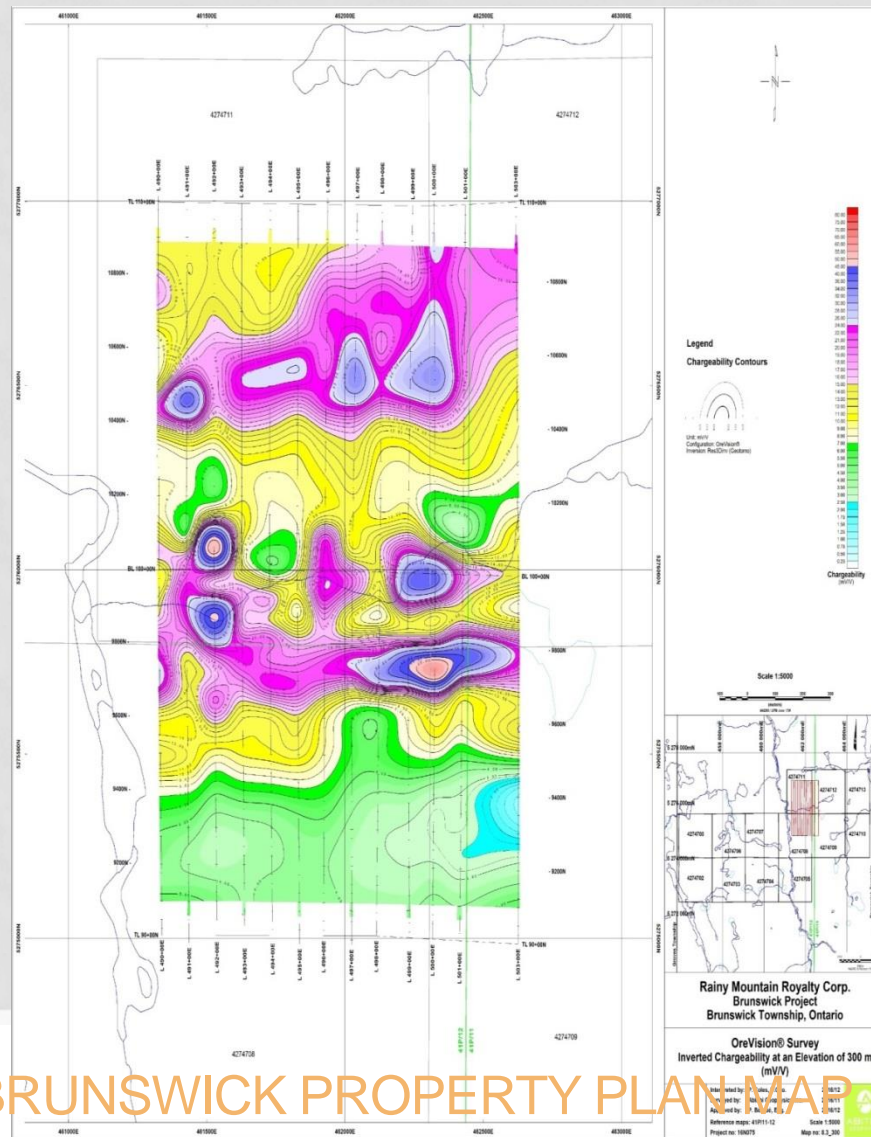
BRUNSWICK PROPERTY

3D IP SURVEY RESISTIVITY RESULTS



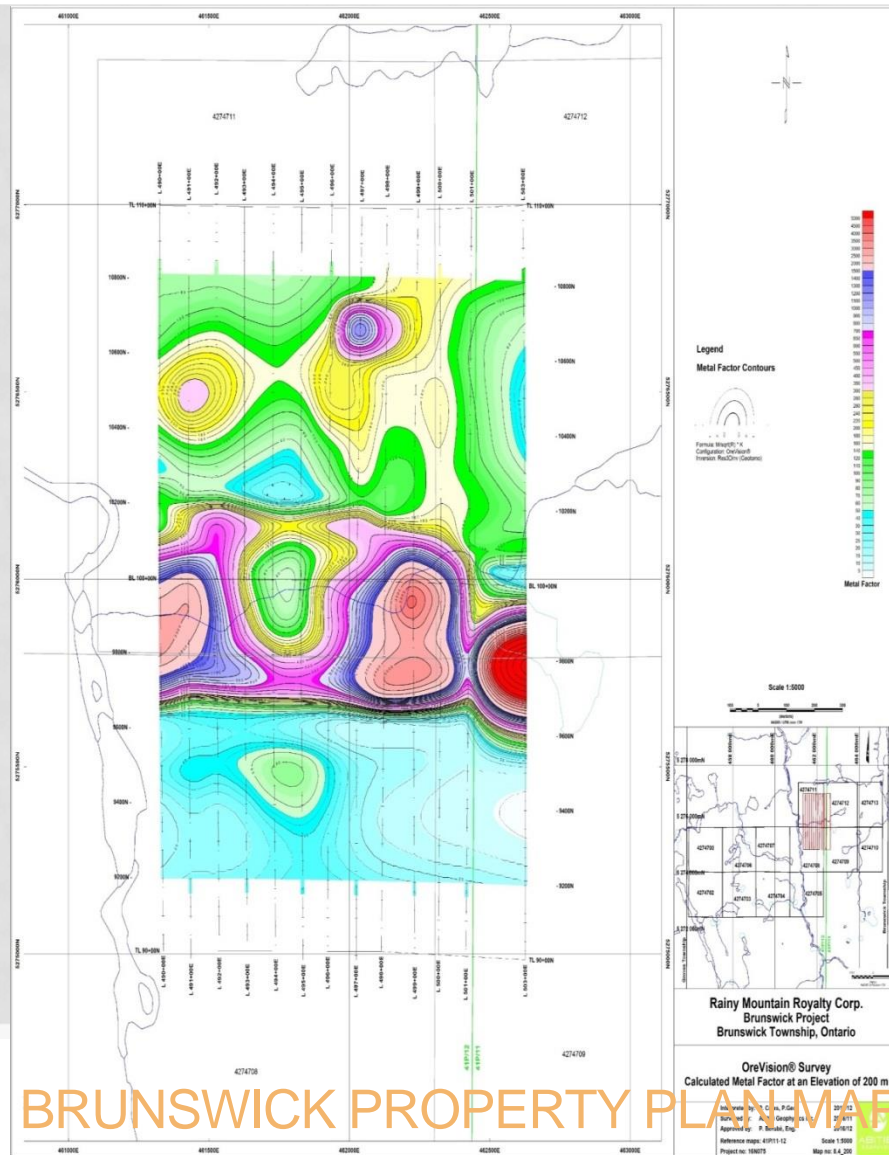
BRUNSWICK PROPERTY PLAN MAP

IP CHARGEABILITY 200 METRE ELEVATION

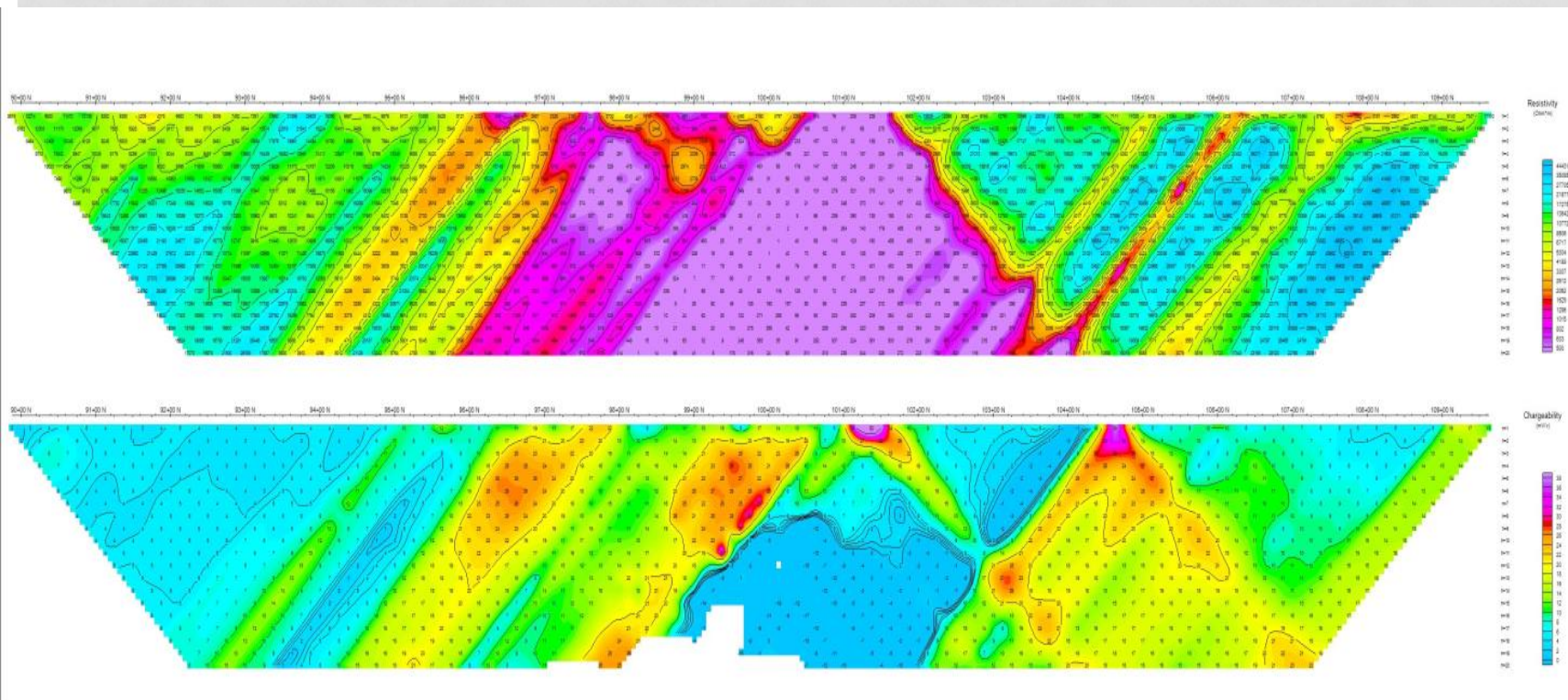


BRUNSWICK PROPERTY PLAN MAP

IP CHARGEABILITY 300 METRE ELEVATION



CALCULATED METAL FACTOR: 200 METRE ELEVATION



OreVision Survey
a = 25 m

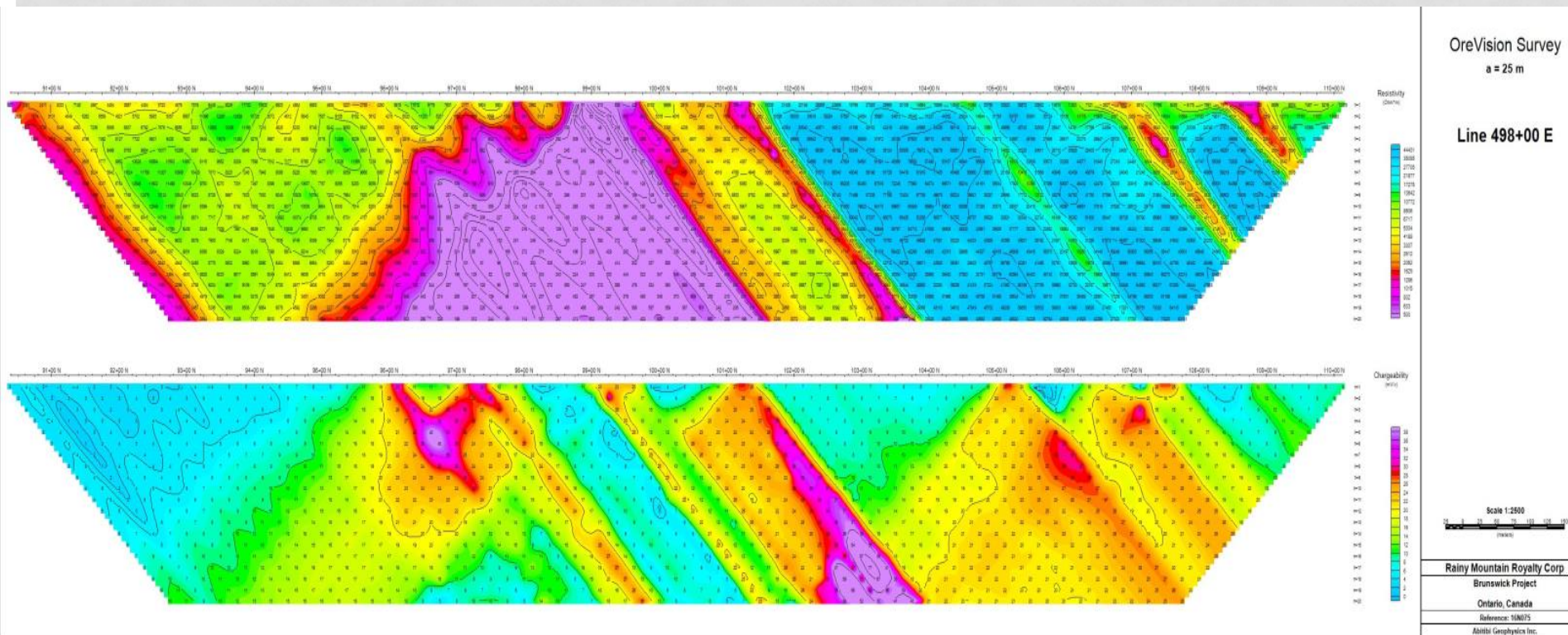
Line 491+00 E

Scale 1:2500
0 25 50 75 100 125 150 175 200
(Meters)

Rainy Mountain Royalty Corp
Brunswick Project
Ontario, Canada
Reference: 10N075
Abitibi Geophysics Inc.

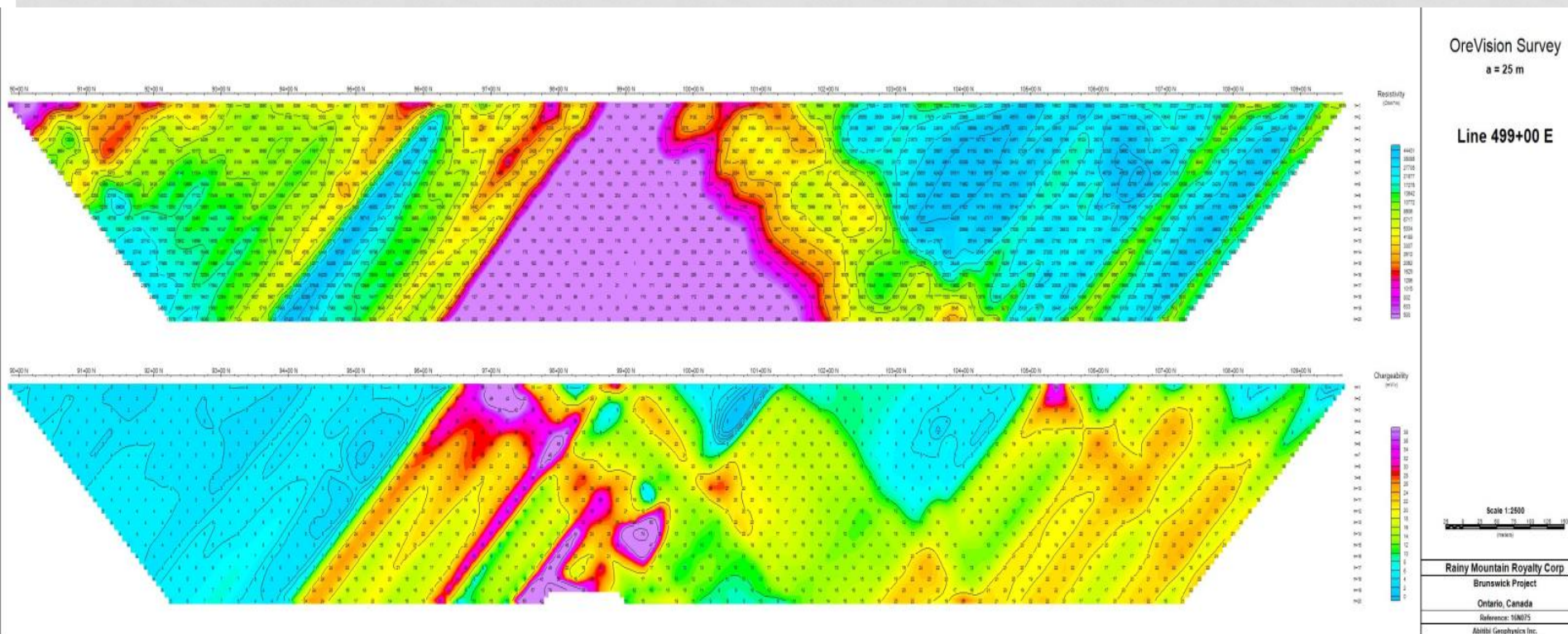
BRUNSWICK PROPERTY IP SURVEY

LINE 49100 EAST



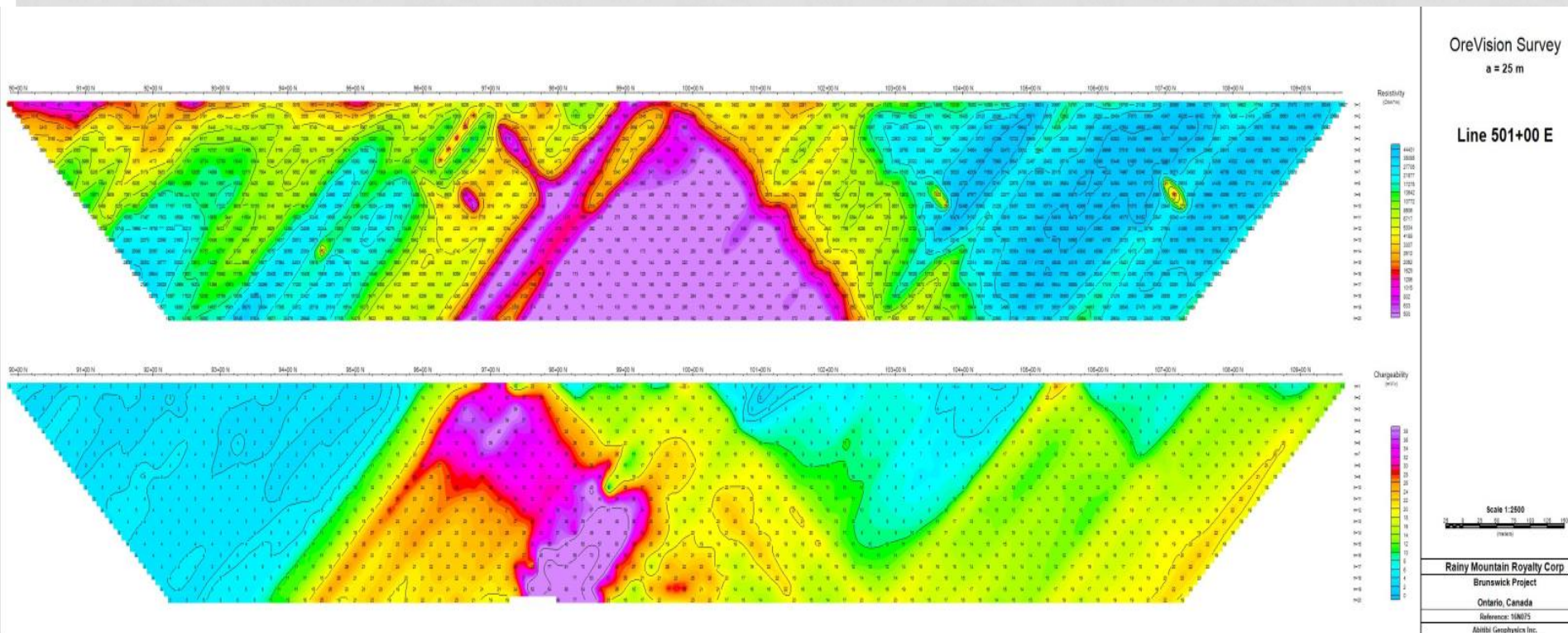
BRUNSWICK PROPERTY IP SURVEY

LINE 49800 EAST



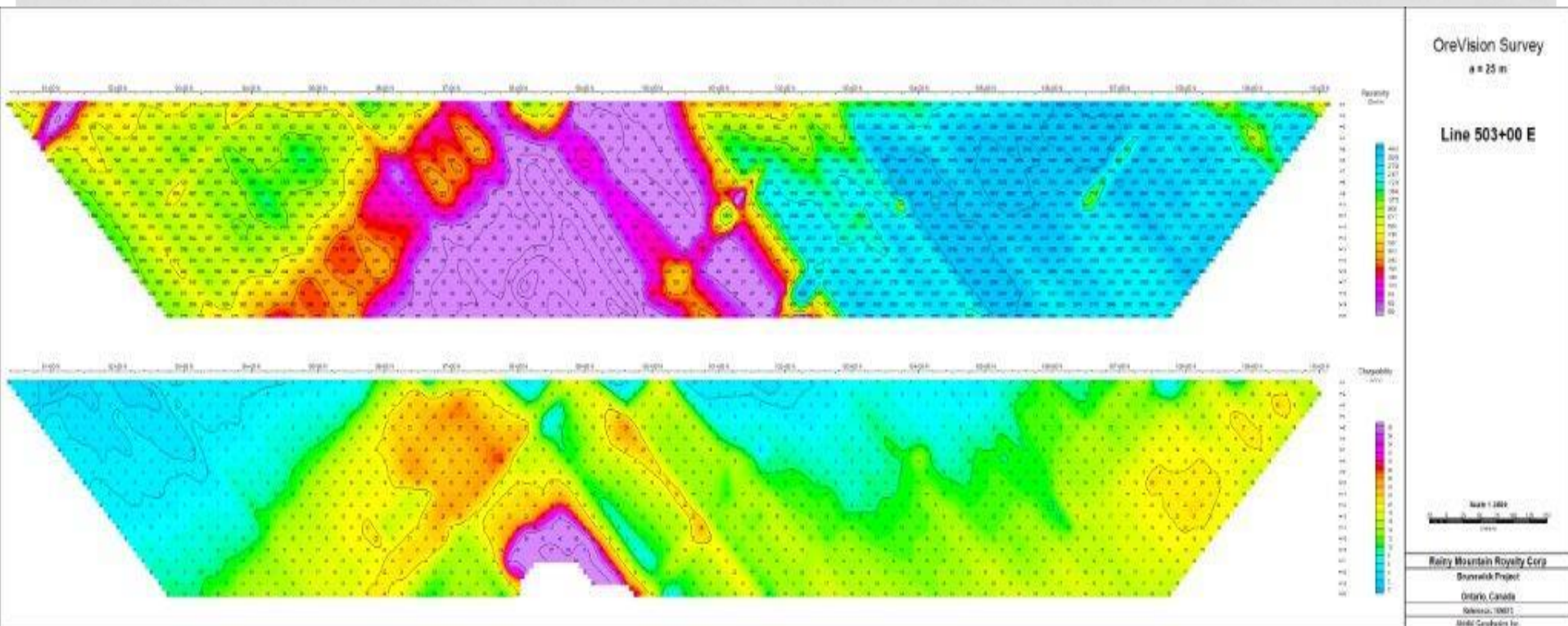
BRUNSWICK PROPERTY IP SURVEY

LINE 49900 EAST



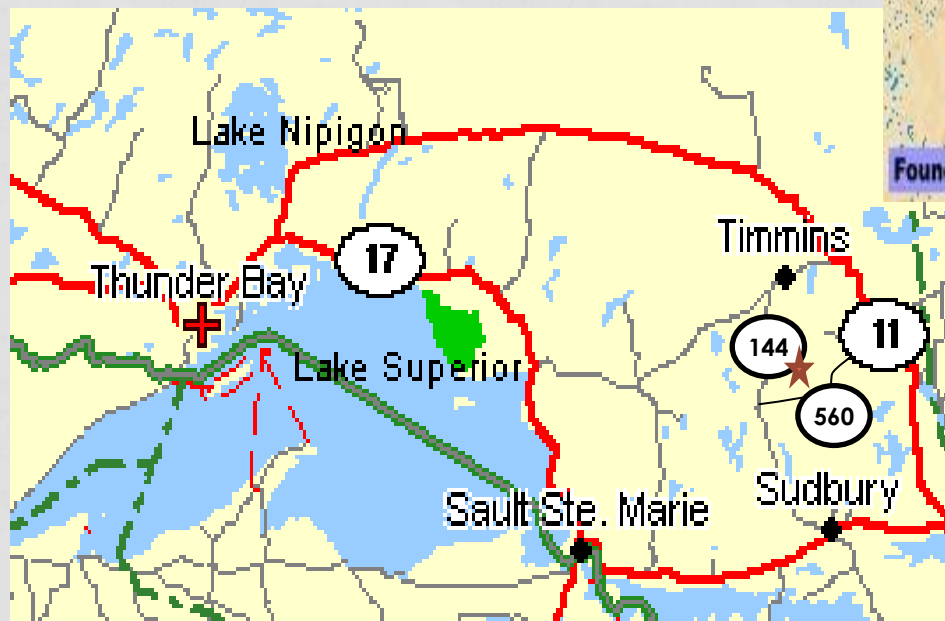
BRUNSWICK PROPERTY IP SURVEY

LINE 50100 EAST



BRUNSWICK PROPERTY IP SURVEY

LINE 50300 EAST



★ Brunswick Property



BRUNSWICK PROPERTY LOCAL AREA INFRASTRUCTURE

ORE CAN BE TRANSPORTED BY TRUCK

Ontario Gold Mines

Porcupine Camp 75 million ounces (31 mines) 1909 to present

Hollinger	20 million oz
McIntyre	11 million oz
Dome	11+ million oz
Pamour	4 million oz

Kirkland Lake 23 million oz (7 mines)

Larder Lake 10 million oz (Kerr Addison Mine)

Other Camps

Borden	4.5-8 million oz
Hemlo (3 mines)	21 million oz
Detour	3.5 million
Geraldton (4 mines)	4 million
Red Lake (6+ mines)	25 million oz



Source: Ministry of Northern Development and Mines, Sudbury Office

ONTARIO GOLD MINE PRODUCTION

TSXV:RMO

FRANKFURT : EK7N-FF

Hemlo Williams Mine



Dome Super Pit



Bell Creek Mine



Kidd Creek Pit



ONTARIO GOLD MINING

GOLD MINES IN THE SURROUNDING AREA

POWELL PROPERTY

GOLD EXPLORATION PROPERTY

100% OWNED BY RAINY MOUNTAIN ROYALTY CORP.

- The Powell Property is 10 km long, consisting of 23 claims or 194 units (3104 Ha) and is located approximately 125 km west of Thunder Bay, Ontario in the Shebandowan greenstone belt.
- The property has had extensive grids (over 110 km) and IP surveys completed, with a limited amount of drilling and trenching.
- Drilling in 2011 (last work done) yielded 2.91 grams Au/1.55m and 8.45 grams Au/1.9 m.
- The IP surveys have outlined 3 major shear zones which extend southwest from the Ardeen Mine (which operated in the 1880's and was the first gold mine in Ontario), and other shears extending from the Moss Lake gold deposit (now being developed by a Wesdome Gold Mines subsidiary Moss Lake Gold Mines Ltd.).
- The Powell property is contiguous with the Hamlin property recently purchased by Wesdome Gold Mines where a large copper-gold-silver IOCG system was outlined by Rainy Mountain in 2005-2007, and subsequently drilled further by Xstrata Copper (now owned by Glencore Canada Corporation) in 2008-2012 .
- Rainy Mountain plans to continue working on the Powell property by extending the IP Survey anomalies and shears, and thereafter, by drilling any observed targets.

POWELL PROPERTY

GOLD EXPLORATION PROJECT



RAINY MOUNTAIN

ROYALTY CORP.

COMPANY CONTACT INFORMATION

2489 Bellevue Avenue,
West Vancouver,
British Columbia Canada
V7V 1E1

Telephone: 604.922.2030
Toll Free: 1.888.888.9122
(Canada)
Website: www.rmroyalty.com

Douglas Mason, President & CEO
Tel: 604.922.2030 extension 405
E-mail: dmason@waterfrontgroup.com

Clive Shallow, Shareholder Communications
Tel: 604.922.2030 extension 403
E-mail: clive@waterfrontgroup.com

Robert Middleton, P.Eng., VP Exploration
Tel: 289.952.3695
Email: rsmiddleton7@gmail.com

CONTACT INFORMATION

TSXV:RMO

FRANKFURT : EK7N-FF